

# DUCTED WITH MEDIUM STATIC PRESSURE



## MONOSPLIT DUCTED TYPE UNIT

The Hokkaido Ducted systems combine first class features with a plain design for easy installation and maintenance. Our ducted air conditioning units are suitable for both residential and commercial applications.

## OPERATION

**-15~50°C**  
in cooling

**-15~24°C**  
in heating

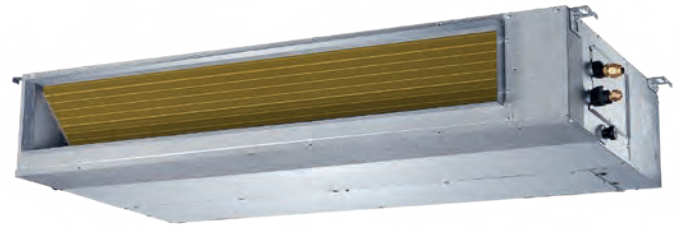
## PERFORMANCE

MODEL	SEER	SCOP
<b>3.52 kW</b>	6.30/A++	4.00/A+
<b>5.28 kW</b>	6.50/A++	4.00/A+
<b>7.03 kW</b>	6.20/A++	4.00/A+
<b>9.97 kW</b>	6.10/A++	4.00/A+
<b>12.71 kW</b>	6.10/A++	4.00/A+
<b>13.01 kW</b>	6.10/A++	4.00/A+

.....


# DUCTED WITH MEDIUM STATIC PRESSURE

HUCU 351-531 ZAL



-15~50° C in cooling

-15~24° C in heating

Compatible with systems 

Condensate drain pump included with possibility of raising the discharge up to 750 mm from the lower height.

**100 Pa** | Automatic adjustment of the static pressure of the fan at constant flow rate.

**Wired remote control included**

  
**Wi-Fi optional**



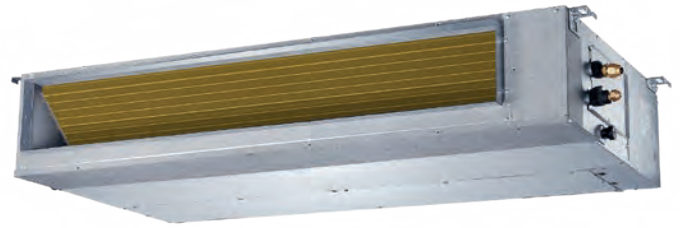
Indoor unit model		HUCU 351 ZAL		HUCU 531 ZAL	
Outdoor unit model		HCKI 351 ZA-1		HCKI 531 ZA-1	
<b>Type</b>		DC-Inverter heat pump			
Control (included)		Wired remote control			
<b>Nominal data</b>					
Rated capacity (T=+35°C)	Cooling	kW	3.52 (0.53~3.99)	5.28 (2.55~5.86)	
Rated absorbed power (T=+35°C)		kW	1.05 (0.16~1.37)	1.53 (0.71~2.15)	
Rated energy efficiency coefficient		EER <sup>1</sup>	3.34	3.45	
Rated capacity (T=+7°C)	Heating	kW	3.81 (1.00~4.39)	5.57 (2.20~6.15)	
Rated absorbed power (T=+7°C)		kW	1.03 (0.30~1.39)	1.50 (0.74~1.76)	
Rated energy performance coefficient		COP <sup>1</sup>	3.71	3.71	
<b>Seasonal data</b>					
Theoretical load (Pdesignc)	Cooling	kW	3.50	5.40	
Seasonal energy efficiency index		SEER <sup>2</sup>	6.30	6.50	
Seasonal energy efficiency class		626/2011 <sup>3</sup>	A++	A++	
Annual energy consumption		kWh/y	194	291	
Theoretical load (Pdesignh) @ -10°C	Heating (average climate conditions)	kW	2.70	4.30	
Seasonal energy efficiency index		SCOP <sup>2</sup>	4.00	4.00	
Seasonal energy efficiency class		626/2011 <sup>3</sup>	A+	A+	
Annual energy consumption		kWh/y	945	1505	
<b>Electrical data</b>					
Power supply	Outdoor unit	Ph-V-Hz	1Ph - 220/240V - 50Hz		
Power cable		Type	3 x 2.5 mm <sup>2</sup>	3 x 4 mm <sup>2</sup>	
Connection wires between I.U. and O.U.		no.	4	4	
Rated absorbed power	Cooling	A	4.80 (1.30~6.10)	7.10 (3.20~9.60)	
	Heating	A	4.50 (1.50~6.20)	6.80 (3.30~7.70)	
Maximum current		A	9.00	13.50	
Maximum absorbed power		kW	1.85	2.95	
<b>Refrigerant circuit</b>					
Refrigerant <sup>4</sup>		Type (GWP)	R32 (675)		
Quantity refrigerant pre-load		Kg	0.71	1.15	
Tons of CO2 equivalent		t	0.479	0.776	
Diameter of refrigerant piping on liquid/gas		mm (inches)	6.35(1/4") / 9.52(3/8")	6.35(1/4") / 12.74(1/2")	
Max splitting length		m	25	30	
Max height difference I.U./O.U.		m	10	20	
Split length without additional charge		m	5	5	
Additional charge		g/m	12	12	
<b>Indoor unit specifications</b>					
Dimensions	LxDxH	mm	700x506x200	880x674x210	
Net weight		Kg	17.8	24.4	
Sound power level	Hi	dB(A)	57	58	
Sound pressure level	Hi/Mi/Lo	dB(A)	34.5/32/30	42/39/35	
Treated air volume	Hi/Mi/Lo	m <sup>3</sup> /h	600/480/300	911/706/515	
Fan static pressure	Std/Max	Pa	25/60	25/100	
Condensate drain pipe diameter		mm	ø25	ø25	
<b>Outdoor unit specifications</b>					
Dimensions	LxDxH	mm	765x303x555	805x330x554	
Net weight		Kg	26.6	32.5	
Sound power level		dB(A)	61	65	
Sound pressure level		dB(A)	53.6	56	
Treated air volume	Max	m <sup>3</sup> /h	2200	2100	
Operating range (outdoor temperature)	Cooling	°C	-15~50		
	Heating	°C	-15~24		
<b>Optional parts</b>					
Wi-Fi module			On demand		
Centralized control			DTC IHXR TOUCH / DTCWT IHXR		
Wi-Fi centralized control			XRV Mobile BMS		

1. Value measured according to the harmonised standard EN14511. 2. EU Regulation No. 206/2012. - Value measured according to the harmonised standard EN14825. 3. Delegated Regulation (EU) No. 626/2011 regarding the new energy labelling of air conditioners. 4. Refrigerant leakage contributes to climate change. When released into the atmosphere, refrigerants with a lower global warming potential (GWP) contribute less to global warming than those with a higher GWP. This appliance contains a refrigerant with a GWP of 675. If 1 kg of this refrigerant fluid were released into the atmosphere, therefore, the impact on global warming would be 675 higher than 1 kg of CO<sub>2</sub>, over a period of 100 years. Under no circumstances should the user try to intervene on the refrigerant circuit or disassemble the product. Always contact qualified personnel if necessary.

.....


# DUCTED WITH MEDIUM STATIC PRESSURE

HUCU 351-531 ZAL



-15~50° C in cooling

-15~24° C in heating

Compatible with systems 

Condensate drain pump included with possibility of raising the discharge up to 750 mm from the lower height

**160 Pa** | Automatic adjustment of the static pressure of the fan at constant flow rate

**Wired remote control included**

  
**Wi-Fi optional**



Indoor unit model		HUCI 711 ZA	HUCI 1081 ZA	HUCI 1401 ZA	HUCI 1601 ZA	
Outdoor unit model		HCKI 711 ZA-1	HCSI 1081 ZA-1	HCSI 1401 ZA-1	HCSI 1601 ZA-1	
Type		DC-Inverter heat pump				
Control (included)		Wired remote control				
<b>Nominal data</b>						
Rated capacity (T=+35°C)	Cooling	kW	7.03 (3.28~8.16)	9.97 (2.73~11.78)	12.71 (3.52~15.53)	13.01 (4.10~17.29)
Rated absorbed power (T=+35°C)		kW	2.18 (0.75~2.96)	3.04 (0.89~4.20)	3.90 (0.88~6.00)	3.94 (1.03~6.65)
Rated energy efficiency coefficient		EER <sup>1</sup>	3.23	3.28	3.25	3.30
Rated capacity (T=+7°C)	Heating	kW	7.62 (2.81~8.49)	11.25 (2.78~12.84)	15.03 (4.10~18.17)	16.83 (4.40~20.52)
Rated absorbed power (T=+7°C)		kW	1.90 (0.64~2.58)	2.88 (0.78~4.00)	4.02 (0.95~5.70)	4.48 (0.95~6.60)
Rated energy performance coefficient		COP <sup>1</sup>	4.01	3.91	3.74	3.76
<b>Seasonal data</b>						
Theoretical load (Pdesignc)	Cooling	kW	7.10	10.60	14.00	15.30
Seasonal energy efficiency index		SEER <sup>2</sup>	6.20	6.10	6.10	6.10
Seasonal energy efficiency class		626/2011 <sup>3</sup>	A++	A++	A++	A++
Annual energy consumption	Heating (average climate conditions)	kWh/y	401	608	803	878
Theoretical load (Pdesignh) @ -10°C		kW	5.40	8.80	11.50	12.50
Seasonal energy efficiency index		SCOP <sup>2</sup>	4.00	4.00	4.00	4.00
Seasonal energy efficiency class	626/2011 <sup>3</sup>	A+	A+	A+	A+	
Annual energy consumption	kWh/y	1890	3080	4025	4375	
<b>Electrical data</b>						
Power supply	Outdoor unit	Ph-V-Hz	1Ph - 220/240V - 50Hz		3Ph - 380/415V - 50Hz	
Power cable		Type	3 x 4 mm <sup>2</sup>	5 x 2.5 mm <sup>2</sup>	5 x 4 mm <sup>2</sup>	
Connection wires between I.U. and O.U.		no.	4	4	4	
Rated absorbed current	Cooling	A	10.20 (4.20~13.20)	6.50 (1.40~6.70)	8.40 (1.90~10.40)	9.60 (3.10~11.50)
	Heating	A	9.20 (3.80~11.60)	5.30 (1.30~6.40)	8.00 (2.00~9.80)	9.50 (2.00~11.50)
Maximum current		A	19.00	10.00	13.00	14.00
Maximum absorbed power		kW	3.70	5.00	6.90	7.50
<b>Refrigerant circuit</b>						
Refrigerant <sup>4</sup>	Type (GWP)	R32 (675)				
Quantity refrigerant pre-load	Kg	1.5	2.4	2.9	3	
Tons of CO2 equivalent	t	1.013	1.620	1.958	2.025	
Diameter of refrigerant piping on liquid/gas	mm (inches)	9.52(3/8") / 15.88(5/8")				
Max splitting length	m	50	75	75	75	
Max height difference I.U./O.U.	m	25	30	30	30	
Split length without additional charge	m	5	5	5	5	
Additional charge	g/m	24	24	24	24	
<b>Indoor unit specifications</b>						
Dimensions	LxDxH	mm	1100x774x249	1360x774x249	1200x874x300	1200x874x300
Net weight		Kg	32.3	40.5	47.4	47.6
Sound power level	Hi	dB(A)	61	61	66	66
Sound pressure level	Hi/Mi/Lo	dB(A)	49/46/41	50.5/49/47	51.5/49/47	52.5/49/47
Treated air volume	Hi/Mi/Lo	m <sup>3</sup> /h	1229/1035/825	2100/1800/1500	2400/2040/1680	2600/2210/1820
Fan static pressure	Std/Max	Pa	25/160	37/160	50/160	50/160
Condensate drain pipe diameter		mm	ø25	ø25	ø25	ø25
<b>Outdoor unit specifications</b>						
Dimensions	LxDxH	mm	890x342x673	946x410x810	952x415x1333	952x415x1333
Net weight		Kg	43.9	80.5	103.7	107
Sound power level		dB(A)	67	70	73	74
Sound pressure level		dB(A)	60	63	63.5	64
Treated air volume	Max	m <sup>3</sup> /h	3500	4000	7500	7500
Operating range (outdoor temperature)	Cooling	°C	-15~50			
	Heating	°C	-15~24			
<b>Optional parts</b>						
Wi-Fi module	On demand					
Centralized control	DTC IHXR TOUCH / DTCWT IHXR					
Wi-Fi centralized control	XRV Mobile BMS					

1. Value measured according to the harmonised standard EN14511. 2. EU Regulation No. 206/2012 - Value measured according to the harmonised standard EN14825. 3. Delegated Regulation (EU) No. 626/2011 regarding the new energy labelling of air conditioners. 4. Refrigerant leakage contributes to climate change. When released into the atmosphere, refrigerants with a lower global warming potential (GWP) contribute less to global warming than those with a higher GWP. This appliance contains a refrigerant with a GWP of 675. If 1 kg of this refrigerant fluid were released into the atmosphere, therefore, the impact on global warming would be 675 higher than 1 kg of CO<sub>2</sub>, over a period of 100 years. Under no circumstances should the user try to intervene on the refrigerant circuit or disassemble the product. Always contact qualified personnel if necessary.